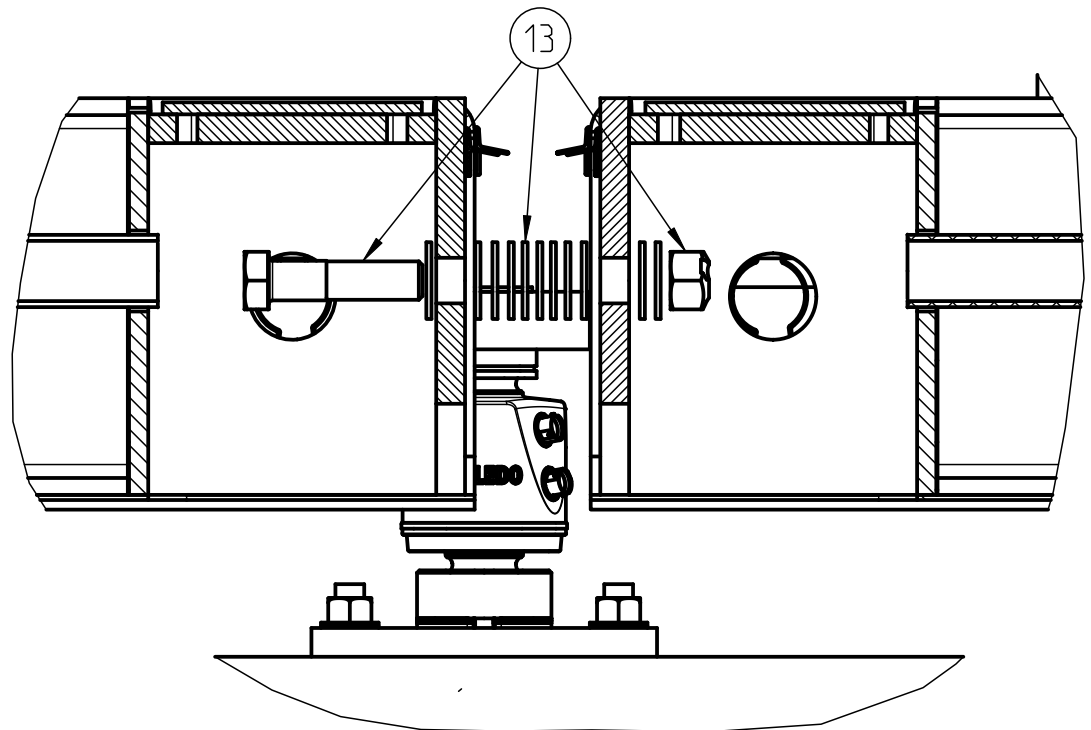


SIZE & CONFIGURATION					DIMENSIONAL CHART						
SCALE SIZE	MODULE 1	MODULE 2	MODULE 3	MODULE 4	FDN OPENING ("A")	DECK LENGTH "B"	TOTAL L/C "C"	"D"	"E"	"F"	"G"
70'	17.5'	17.5'	17.5'	17.5'	70'-2" ±1/2"	69'-11 1/2"	69'-2"	17'-1"	17'-1"	17'-1"	17'-1"
75'	17.5'	20'	20'	17.5'	75'-2" ±1/2"	74'-11 1/2"	74'-2"	17'-1"	20'-0"	20'-0"	17'-1"
80'	20'	20'	20'	20'	80'-2" ±1/2"	79'-11 1/2"	79'-2"	19'-7"	20'-0"	20'-0"	19'-7"
87'	20'	23'	23'	20'	86'-10" ±1/2"	86'-7 1/2"	85'-10"	19'-7"	23'-4"	23'-4"	19'-7"
90'	23'	23'	20'	23'	90'-2" ±1/2"	89'-11 1/2"	89'-2"	21'-1"	23'-4"	20'-0"	22'-11"
93'	23'	23'	23'	23'	93'-6" ±1/2"	93'-3 1/2"	92'-6"	22'-11"	23'-4"	23'-4"	22'-11"



B-B
COUPLING KOP
1:5

NOTES:

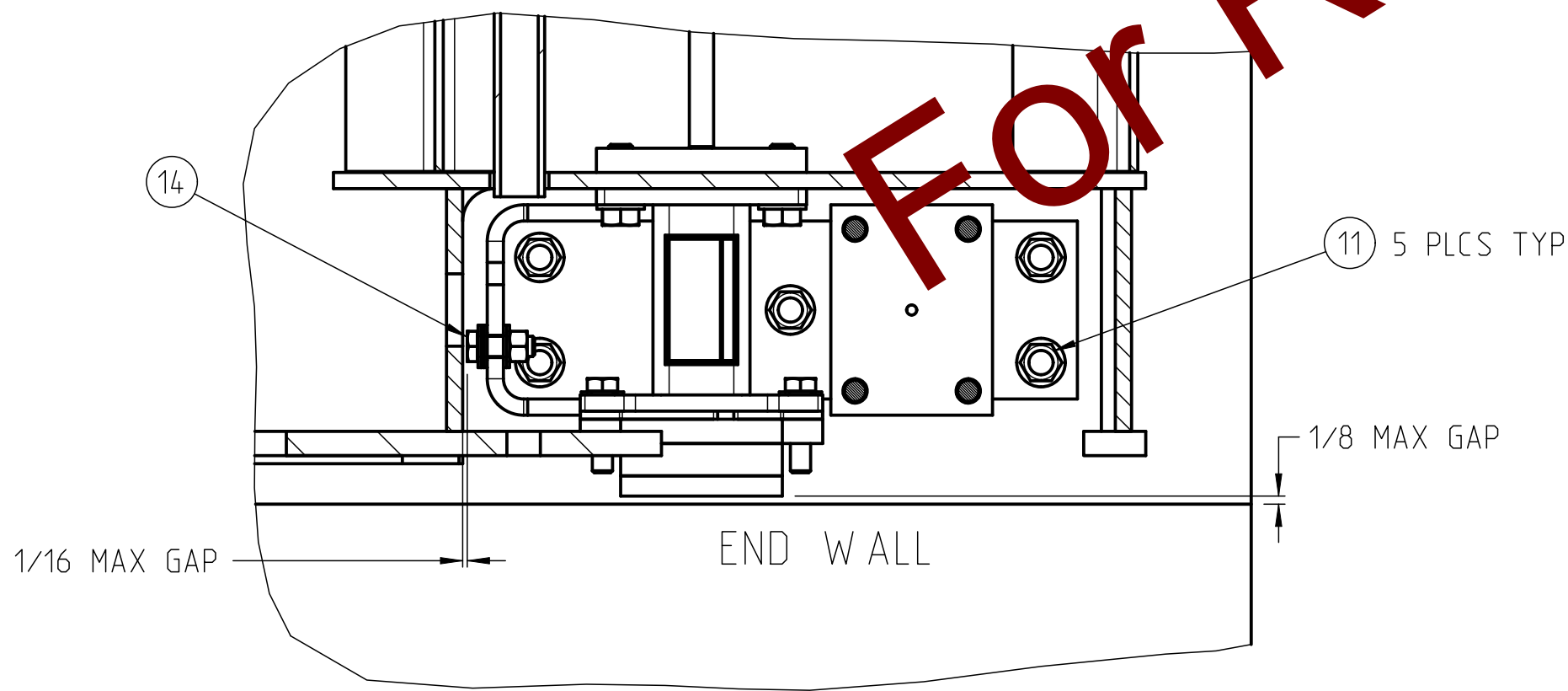
1. COMPLETE LISTING OF INSTALLATION PROCEDURES AND PRECAUTIONS CAN BE FOUND IN THE INSTALLATION MANUAL.
2. FOUNDATION LENGTH DIMENSION SHOWN IS NOMINAL. ACTUAL TOLERANCE IS ±1/4".
3. APPLY 2 DROPS OF LOCTITE #262 TO ALL LOAD CELL RECEIVER PINS.
4. CABLE CONNECTOR CONTAMINANTS MAY BE REMOVED WITH CONNECTOR CLEANER (PROVIDED).
5. ADD OR REMOVE COUPLER WASHERS TO ADJUST LENGTH OR SWEEP DURING INSTALLATION ONLY. SHIM CHANGES AFTER BASE PLATES ARE SET MAY CAUSE LOAD CELL MISALIGNMENT AND WEIGHING ERRORS. REFER TO COUPLER KIT DRAWING FOR DETAILS.
6. BUMPER SHIMS MAY BE ADDED OR REMOVED TO ADJUST BUMPER GAP SIZE. REFER TO CHECKING KIT DRAWING FOR DETAILS.
7. MANHOLE INSTALLATION DETAILS CAN BE FOUND ON THE MANHOLE KIT DRAWING.
8. SIDERAIL INSTALLATION DETAILS CAN BE FOUND ON THE SIDERAIL KIT DRAWING.

CONCRETE NOTES:

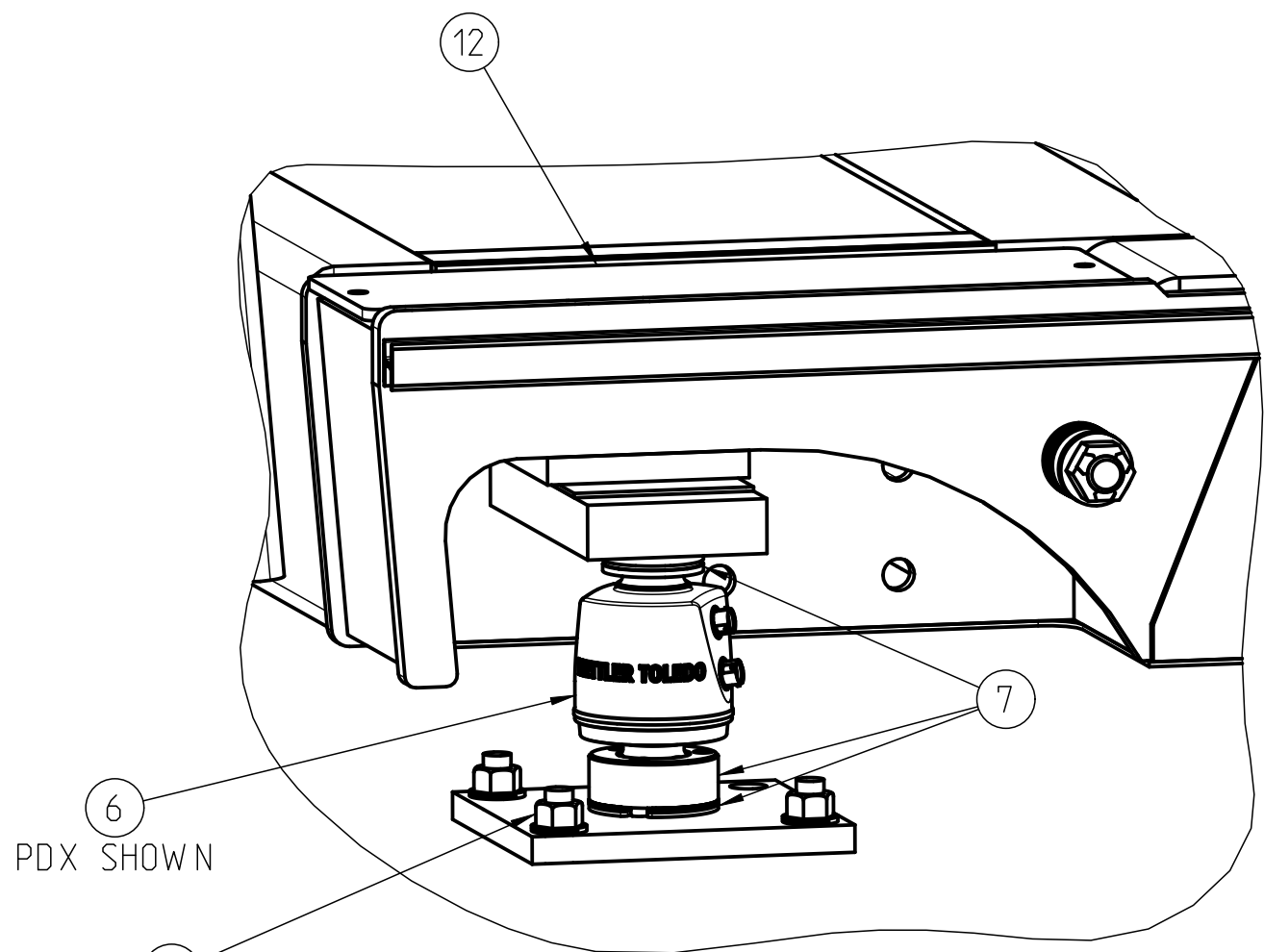
- C1. REFER TO DRAWING 61800002 FOR CONCRETE SPECIFICATION.
- C2. SHORING IS NOT REQUIRED. HOWEVER, SHORING FOR MODULES LONGER THAN 20' MAY BE DESIRED TO INCREASE CLEARANCE BENEATH THE SCALE. IF SHORING IS DESIRED, LOCATE SHORING AT THE CENTER OF EACH MODULE.
- C3. CONCRETE SHALL BE DIRECT CHUTE PLACED AND THOROUGHLY CONSOLIDATED USING A SPUD TYPE VIBRATOR.
- C4. USE OF CALCIUM CHLORIDE ADMIXTURE IS NOT PERMITTED.
- C5. AFTER FINISHING, A STYRENE BUTADIENE TYPE (30% SOLIDS MIN) CURING COMPOUND SHALL BE APPLIED.
- C6. ESTIMATED CONCRETE PER MODULE IN CUBIC YARDS (REF ONLY):
15'X11' = 5.2 17'6X11' = 6.0 20'X11' = 6.9 23'4X11' = 8.0

IMPORTANT:

THE INTERIOR SURFACE OF ALL LOAD CELL RECEIVERS (BOTH TOP AND BOTTOM) MUST BE GREASED DURING CELL INSTALLATION.



D-D
1:5



DETAIL E
MID BASEPLATES
1:5

(OPTIONAL)	19	4	***	Siderail Kit
(OPTIONAL)	18	*	61023474	Manhole Cover and Ring
	17	1	***	Lightning Protection Kit
VTC251 (PDX) ONLY	16	1	68004258	MTX Connection Cleaner
	15	1	30236780	Installation KOP VTX2X1 Fluids 3-4 Mods
	14	1	30565648	Checking KOP VTC25X
	13	3	30565649	Coupling KOP VTC25X
	12	16	30558537	Cover VTC25X Access
	11	38	68004325	Anchor Bolt Expansion 3/4-10x5.5
	10	4	30565038	Base Plate VTC25X End
	9	6	30564797	Base Plate VTC25X Mid
VTC250 (GDD) ONLY	8	1	30283749	KOP GDD Wiring VTX100 4-Mod
VTC251 (PDX) ONLY			***	KOP PDX Wiring 10Lc
VTC250 (GDD) ONLY	7	5	30343577	Load Cell Assembly KOP GDD 2Lc
VTC251 (PDX) ONLY			30284510	Load Cell Assembly KOP PDX 2Lc
VTC250 (GDD) ONLY	6	14	72236271	Load Cell GDD-30t N10K 11ILM
VTC251 (PDX) ONLY			42904883	Load Cell SLC820-30t N10K11IL-M/C3
	5	1	30590803	Assembly VTC25X Term
	4	2	30590802	Assembly VTC25X Mid
	3	1	30590801	Assembly VTC25X 1ST
	2	9	***	Conduit 1.50 Sch 40 Pvc
	1	4	***	Module VTC25x
ITEM	QTY	PART NUMBER	DESCRIPTION	

A		UPDATED MANHOLE LOCATION DIM.	KRS	APPVD	AGENCY	E.R. NO.	7/23/20
REV	ZONE	DESCRIPTION	BY	APPVD	AGENCY	E.R. NO.	DATE
CHG							
RECORD OF CHANGES							

METTLER TOLEDO		MTMS	US-43229 Columbus OH	Drawn	Seeley, Kevin	11-Mar-2020	Scale	150
Refer to protection notice ISO 16016 / Schutzvermerk ISO 16016 beachten		Change	-	Note	-	-	Format	ANSI D
Description		No		ERP No		ERP Rev		
VTC251 GLO 4-MOD		61809714		Rev A		Replaces -		
Model: D000462979 Rev: A		Drawing: D000462979 Rev: A		Status:		Units: INCH 1/1		